

# HALLMARK

The magazine for Lacey Green and Loosley Row



September 2024

Issue 271



# HEARING CARE SERVICES NOW AVAILABLE



JACKSON & Co

247 Main Road, Walters Ash // 01494 564600



# Welcome to the September edition

**EDITOR** Mike Piercy 01844 344021 mike.piercy@gmail.com

**ADVERTISING** Fiona Quilter-Wood. email hallmarkadverts@gmail.com 07809 624 864

**VILLAGE HALL BOOKINGS** Natasha on 07737 638718 laceygreenhall@gmail.com

Our cover photo features Xavier one of the new residents in Kiln Lane. If you want to find out more about alpacas see Andy's hilarious article on page 18.

There's lots of news on the Windmill front - the good news is that we raised all the money to do the repair work. Congratulations to the local team and the Chiltern Society fundraisers for a magnificent achievement. The bad news is that the timescale for completion has slipped back to the end of the year. See Jane's article on p7.

The improvements to the Village Hall continue. The area outside the entrance has tables and seating with planters full of flowers. We even have a couple of parasols that you can erect if the weather is too sunny for your tastes. Inside you will find a brand new industrial electric cooker to help prepare food.

Each year the cost of producing Hallmark rises. Though we do get income from our adverts, this does not cover the production costs, so each year we ask residents to contribute to the production costs – and any surplus goes to fund improvements in the Village Hall.

The contributions are entirely voluntary; you will still receive the magazine even if you are not able to contribute. The cost of producing each issue is about £2 per copy - £8 across the year. So we suggest a donation in the £5 to £10 range.

You can pay in a variety of ways. You can give cash or a cheque to the person who delivers the magazine. Alternatively you can put cash or cheque in the attached envelope and return it to Leigh Axe, 4, Woodfield, Lacey Green HP27 0QQ. Finally you can pay by Internet banking to Lacey Green & Loosley Row Village Hall Fund, Sort code: 20-85-73, a/c 30557900, quoting reference "Hallmark Dons". Thank you for your support.

**This autumn is the 25<sup>th</sup> anniversary of the Millennium Hall. We had hoped to have a celebration party in October but for one reason and another we are now going to do this in the Spring. More details in the December issue.**



# Weekly Schedule of Activities

Your local village hall is busy with regular users, with lots of variety on offer for the local residents of all ages, in Lacey Green, Speen and Loosely Row! Here is what is currently on offer...

Recently started is Mucky Ducks; a baby and toddler messy play group which runs in the morning on every 3rd Monday of the month. (contact Hannah at muckyducksbuckandhemel@gmail.com).

Monday afternoons see the local Indoor Bowls group in action! (For more info contact Leigh at leighaxe@btinternet.com).

Monday evenings the hall is used for local karate lessons from Seido Karate. With classes for children aged 6 to adult! (contact Alan at alan@avtechuk.com).

Tuesday mornings we have Yoga classes with Claire (hello@clairepageyoga.com). Wednesday mornings is Pilates classes with Rosie

(rosielewin@me.com).

The WI meets in the hall in the evening of the first Wednesday of every month. The U3A group also meet every month on a Wednesday evening.

We have regular meetings with the West Wycombe Art Society, who hold some of their events and art shows at the hall.

A local resident, Heather, also runs very popular Upholstery classes on a Thursday morning (For more info contact Heather at heatherbreed@hotmail.co.uk).

When the weather turns colder, the Whiteleaf Bowmen use the hall for their sessions on Wednesday and Thursday evenings. (contact Jan at Secretary@whiteleafbowmen.org.uk).

There is also a regular coffee morning every Thursday in the meeting room at 10am where everyone is welcome to attend!

The Horticultural Society hold annual events and host special speakers throughout the year.

Our local amateur dramatics group, Equus, hold many of their practices and performances at the hall throughout the year. (For more info contact Fiona at hello@fionamichaels.com).

The LLS Youth Club meets fortnightly, in term time, on Friday evenings for children aged 11 upwards. (contact Natasha at natashakann@gmail.com)

The Millennium Hall is also available to hire for private events with charges stated on the Lacey Green website (<https://www.laceygreen.com>). If you would like to hire the hall for a private function please email laceygreenhall@gmail.com

## Natasha Kann

(Bookings Secretary)

## LLS Youth Club

Lacey Green, Loosely Row and Speen Youth Club is taking a break over the summer holidays but will start back in September with another wonderful term filled with fun and excitement!

We will be welcoming new Year 6 pupils from the area in September. All children in Year 6-10, who live in Lacey Green, Loosely Row or Speen are welcome to attend; as well as those who attended St John's School. The next term's dates are also available on the Lacey Green Website.

We meet fortnightly, for just £3 a session, at the Millennium Hall, 7:30pm-9pm. Although some sessions may be elsewhere! Last term we visited Risborough Springs for the Fun Splash session, Roller Mania at Wycombe Leisure Centre and also used the school field for Laser Tag!

We will return for the Autumn term on Friday 6th September at the Millennium Hall.

This term will include a session of Tag Rugby, Fun Splash, Halloween fun and a Christmas disco to name but a few!

As always, we will have a tuck shop, pool table, table football, air hockey, table tennis, plus many more fun activities and while the weather stays warm and dry; the outside area, which is always popular for football and tik tok dancing!

As with all volunteer-run organisations, we are always looking for helpers and volunteers who would like to join us; or any locals that may have particular skills or hobbies that they would like to share with our young people. So, if this is you...please do get in touch!



Thank you so much to all the parents who have been helping out. Without these helpers we would not be able to offer this fabulous club to our youngsters.

For more information about the LLS Youth Club, please visit the Lacey Green website [www.laceygreen.com](http://www.laceygreen.com) or email directly to natashakann@gmail.com

## Natasha Kann

Youth Club Leader

# WHAT'S ON

## September

Sun Sept 15 - Horts Soc visit to Milletts Farm

Wed Sept 18 - Horts Soc lecture "It's not rocket science"

Sat Sept 21 - Sponsored Walk raising funds for the Church see p13

Sat Sept 21 3.30 & 7.30 - Equus Productions presents Apologia see p6

Thurs Sept 26 - Tennis Club quiz

## October

Sun Oct 6 - All age Harvest Thanksgiving in the church at 10am. This is a family friendly service where we encourage everyone to donate items to the Wycombe Food bank, and enjoy participation from adults and children alike! Harvest Evensong at 6pm.

Sat Oct 26 Autumn Craft Afternoon St Johns School Hall 2pm – 4pm Parents free. £7 for 1 child. £11 for 2 (over 1 year) £15 for 3 in same family. Over 11 years welcome as helpers.

A great variety of craft tables for all ages including leaf painting, printing, and modelling. Refreshments provided. Special Activities include: Pumpkin carving, spooky boxes, Modelling, Junk Modelling.

Competition Tickets in advance to ensure entry: Jenny Stothard kindergymjenny@gmail.com, 07754 518034 or Canon Tony tony.bundock49@gmail.com. Tickets also available on the door

All included except for Christmas tombola.

## November / December

Fri Nov 1 4-9pm and Sat Nov 2 and Sun Nov 3 10-4pm: THE EXHIBITIONISTS present their CHARITY CHRISTMAS ART FAIR at Holy Trinity Church, Bledlow, HP27 9PD where we will be raising funds for 'Hearing Dogs for Deaf People', Holy Trinity Church, Bledlow and 'Positive Life Kenya'.

Sunday Nov 10 10am Remembrance Sunday service

Sat Nov 16 Sports Club Race Night

Wed Nov 20 Horts Soc Annual Supper and quiz

Sat Nov 30 10am Village Hall - Bucks Council Surgery

### COFFEE MORNINGS

Held in Village Hall 10am - 12 noon  
Thursdays. Friendly chatting with tea or  
coffee and biscuit.

### OVER-50s PUB LUNCH

Come to the monthly lunch on the first  
Tuesday of the month at the Black Horse.  
Even if you know nobody you will be  
welcome and can meet your neighbours.  
contact Leigh on 345216

### LACEY GREEN WINDMILL

The windmill will reopen in April 2025

For more details see [www.laceygreenwindmill.org.uk](http://www.laceygreenwindmill.org.uk)  
email: [contact@laceygreenwindmill.org.uk](mailto:contact@laceygreenwindmill.org.uk)

### POST OFFICE


Village Hall: Monday & Thursday 9 - 12



Equus Productions  
 An Amateur Production  
 In association with  
 Nick Horn Books Ltd

# APOLOGIA

BY ALEXI KAYE CAMPBELL



19 September at 7:30pm at Hastoe Village Hall  
 21 September at 3:30 and 7:30pm at Lacey Green Village Hall  
[www.equusproductions.org/tickets](http://www.equusproductions.org/tickets)



**ladies & gents**  
 award winning hairstylists

*Mike & Maizie*



OPPOSITE NAPHILL  
 VILLAGE HALL

[www.hairvibe.co.uk](http://www.hairvibe.co.uk)  
 @hairvibes\_2019  
 @MichaelMurphyhair



Owing to a number of circumstances,  
 we have delayed this event until

## Spring 2025

Come and join us for a Street Style Party  
 with music, competitions and a chance to  
 come together as a community.

Full details will appear in the February  
 edition of the Hallmark and you can follow  
 our facebook page @Lacey Green & Loosley  
 Row Village Hall for updates.

If you have any suggestions for the day,  
 please email Fiona on  
[hallmarkadverts@gmail.com](mailto:hallmarkadverts@gmail.com)

### HEATHER BREED UPHOLSTERY



I am a local lady, fully  
 qualified in both  
 traditional and modern  
 upholstery work.



For a free quote & advice call  
 Heather on 0795 4176401

Please view my portfolio on Instagram or Facebook



[@heatherbreedupholstery](https://www.instagram.com/heatherbreedupholstery)  
 HandmadebyHeatherB

# Windmill

WONDERFUL NEWS, we have reached our fundraising target so the work has begun on the Windmill. We are so grateful to everyone who has donated to the appeal, individuals, companies, charities and those who have given us grants, thank you!

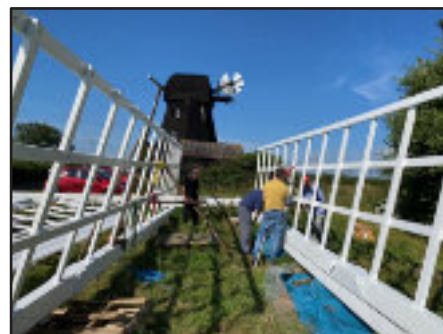
We have been opening the windmill on Sundays and Bank Holiday Mondays since the beginning of April and our last opening this year is Sunday 29 September. Visitor numbers have been lower than usual, someone suggested it is because the sails are missing and it doesn't look like a windmill. Who knows but let's hope next year will be better, the inside of the mill is amazing so still worth visiting.

The sails are painted, and thanks to those supporters who came along to help, it was much appreciated. They look great and ready to go back onto the stocks. Unfortunately the company who are providing the stocks have notified us of a delay in delivery which is a great shame. We had

hoped to get the windmill back to looking spectacular by the end of September but it is now likely to be November; need to keep our fingers crossed for good weather.

We will be holding an evening celebration event in the LG&LR Village Hall; it is likely to be January/February 2025 as we want to wait until the work has been completed. Details will be posted on the various websites and Facebook. It will be a fun evening and I hope you will be able to come along.

We have supported a number of 'special visits' to the windmill, including a local society, U3A group and a children's holiday club, which was great fun for all concerned. The children kept us on our toes with their observations and questions; budding future wardens. If you are a member of a club and want a private tour we are happy to arrange; please contact [jane@laceygreenwindmill.org.uk](mailto:jane@laceygreenwindmill.org.uk) for more information.



The Chiltern Society's Heritage & Culture Festival is offering a visit to the Windmill on Friday 27 September 2024 from 11-12.30 hours. Please see the CS Website for more information.

Supporters are always welcome, if you have any spare time and want to volunteer please get in touch with Jane by email; [jane@laceygreenwindmill.com](mailto:jane@laceygreenwindmill.com).

LGW Committee

## WI

In May we had a very enjoyable visit to the Home of Rest for Horses. We had a short talk from one of the representatives of the Trust. We then walked around the stables and met some very interesting equine characters. This was followed by tea and cake.

Our speaker for June was Adam Smith, a very interesting speaker on the Rothschilds and the Vale of Aylesbury. Waddesdon was once very well known, other houses are almost forgotten but each was the centre of an agricultural estate.

Our Knitting and Sewing Group is still going well but we are having a break for the summer.

We are having a Ploughman's lunch at the Sports Pavilion in August, hope it's not raining.

In July our speaker was Caron Vetter from the Belmont Beauty Centre in Stoke Mandeville. This was a very interesting talk from Caron who is an ex-director of the Belmont Centre.

In July we had a lovely cream tea at the Red Lion in Bradenham. This was a great afternoon with lots of chat and tea and scones.

This month we had Evan Williston telling us tales from the Auction Room. Evan was an excellent and entertaining speaker.

We meet at the Village Hall on the first Wednesday in the month (except January) at 7.15 pm. If you would like to come and join us you would receive a warm welcome. We have lots of interesting speakers and outings.

## Ann Bartlett



## Yoga For Healthy Lower Backs

### A specialised 12-week Course

An evidence-based mind body approach to improving lower back function and reducing pain

"Great course and amazing teacher. After 7 years of neck, shoulder and back pain, I now have weeks of no pain and am improving all the time"  
Sarah



Courses starting in  
Sept in Lacey Green  
and on Zoom

For more information and to sign up, contact  
hello@olairapageyoga.com  
<https://www.yogaforbacks.co.uk>

# extremeclean.co.uk<sup>®</sup>

Superior Cleaning and Application of Protectors

Carpet, Upholstery, Leather  
Modern & Oriental Rugs  
Curtains

Tile & Grout/Stone Flooring  
Anti-Allergen Treatment  
Specialist Stain Removal  
Wood Floor Refinishing  
End of Tenancy Cleans

### Paul Brooker

35 Place Farm Way, Monks Risborough  
Bucks HP27 9JJ

**T: 01844 346379 / 344735**

**M: 07866 376934 E: [jjjp@uwclub.net](mailto:jjjp@uwclub.net)**

[www.extremeclean.co.uk](http://www.extremeclean.co.uk)

## TIMPSONS BUTCHERS

We are a small catering butcher who visit the market daily to ensure we supply high quality, fresh produce and try to source locally where possible.

We also offer a range of fresh meat, eggs, cheese, bread and cakes.

Open Tuesday – Saturday from 9am until 4pm  
and offer FREE local delivery

[timpsonsmallholding@hotmail.co.uk](mailto:timpsonsmallholding@hotmail.co.uk)

Unit 6, Ministry Wharf, Saunderton HP14 3XA



## Priority Service Ltd



- *Cleaning - Regular*
- *Spring Clean*
- *End Of Tenancy Clean*

# 01844 275151

*Friendly, local and professional service*



# D-Day Landing Anniversary

To mark the commemoration of the D-day landings in Normandy, the Parish Council were delighted to work with the staff and pupils of St. John's School and St. John's Church. The commemorations comprised special services in the Church – the first of these was held on the 6th June attended by pupils, staff and parents. During the afternoon of the 6th, the exhibition in the school of pupils' work marking the events of D-day was held (see article below by pupils).

When judging the huge range of exhibits for the competition that

had been organised jointly by the school and the Parish Council, I was struck and impressed by the enormous effort, creativity and research all the pupils put into their exhibits. This made my job as judge extremely difficult. The Parish Council had donated prizes for the winning pupil in each Year Group. The prize giving was held during a school assembly at a later date.

Members of The Lacey Green Local History Group were also present during the afternoon displaying artefacts, photos and other memorabilia appropriate to the D-day period. This generated

wide interest for pupils, staff and parents alike.

On the Sunday immediately after the D-day anniversary, another special service was held in the Church when many of the pupils' exhibits were on display.

The History Lead and staff of St. John's School and the Parish Council look forward to the opportunity of working together on some future project.

**Keith Bowler**

Lacey Green Parish Council

In St Johns Primary School Hall in Lacey Green, we held an exhibition on the 6th of June to celebrate the 80th anniversary of D-day and to commemorate the soldiers that lost their lives or lost family in the battles on the Normandy beaches.

In the exhibition at school, we had each class showing a different way to remember the soldiers, such as poems and models. There were tables, benches and bulletin boards to display the work. There were small signs to show whose work was whose.

Reception made medals out of gold or silver card and decorated them with small gems of multiple colours (such as green, yellow and purple) there were also photos of some soldiers that fought in the invasion or in the prior battles. They were to represent what recognition the soldiers that may have received after the war.

Year 1 and 2 made paratroopers and left out whiteboards to leave messages in morse code (one of the students brought in a decoder but it wasn't displayed). They made the paratroopers out of string connected to Lego characters and made the parachutes from tissue. People of all different sizes and colours, were made to represent the paratroopers and how they were all different.

Year 3 and 4 made parachute prayers which had a paratrooper (a small green soldier) connected to a parachute with a prayer displayed, each prayer had a different meaning and all of them were very interesting. These were displayed on a bulletin board. Some of them also made silhouette soldiers (black card against a colourful background, normally a sun set).

Year 5 and 6 did some poetry letters (the letters were written like the last letter a soldier wrote to their family) and a handful of year sixes even made some 3D models, most commonly out of boxes. These were displayed along tables and benches at the back. Year 6 also did some research about their models and some of them were labelled with the features. All of them said who made them.



Overall, we had a wonderful day at the display and learnt a lot about D-day from the other classes and from personal accounts brought in. I found it very interesting, and I think we should include more history in our topics. All the visitors to the exhibition really enjoyed their time looking around.

**Daisy S**



# The Black Horse

We are having a great summer at The Black Horse and have enjoyed some lovely sunny evenings in our spacious pub garden.

It's been a great season for both food and drink. Heather has been cooking up some great specials in the kitchen and we have had Nina's curries on the special board which have gone down very well.

There have been some renovations around the pub with some new lighting in the garden and a new coat of paint throughout and we couldn't be happier with the results.

We would like to wish Lynne Comley a happy 70th Birthday. She was a great Landlady at the pub for many years and continues to be an important part of the team. We hope she had a great party and enjoys her trip to Australia later in the year!

It is always a pleasure to have the company of the Over 50's Pub Lunch on the first Tuesday of the month. All are welcome so if you are interested in joining, please see the contact details at the back of the Hallmark.

Dominoes and Crib teams are doing well. If you are interested in getting involved in the pub team,

please don't hesitate to get in touch. We are also looking for more teams so if you know of one please contact Lynne.

Looking to the year ahead we have lots of exciting things lined up. We are working away at our Christmas menu, so keep an eye on the website and Facebook for more information on this soon!

## The Black Horse Team



**THE BLACK HORSE**

WE ARE A TRADITIONAL COUNTRY PUB THAT OFFERS A RANGE OF HOME-MADE PUB CLASSICS, AS WELL AS SEASONAL SPECIALS!

OPENING HOURS  
 MONDAY - SATURDAY: 12PM - LATE  
 SUNDAY: 12PM - 9PM

LUNCH: MONDAY - SUNDAY 12-2:30  
 EVENING: MONDAY - SATURDAY 6-8:30

CALL TO BOOK YOUR TABLE ON 01844 345195  
 SEE OUR FULL MENU AND EVENTS @  
[WWW.THEBLACKHORSELG.CO.UK/](http://WWW.THEBLACKHORSELG.CO.UK/)

# Tennis Club

It's been a great summer at LGLR tennis club. It finally stopped raining and the courts have been packed! The toilet build is well underway and expected to be completed by the time of publication.

The club has been very competitive in the league. The ladies are top of division 6 with 2 fixtures left to play. The mixed doubles are second in the league and also through to the Knockout Bronze Cup, beating Aston Park

and Chesham along the way. Jo Boothroyd and Matt Keene have been the top pairing, not losing a single match!

Early days for the men's first team sitting at 6th but only having played 3 matches. The men's second team are top of division 7 and looking likely to be promoted.

The final of the men's and women's singles competition will be held on the 22nd September,

along with an informal social. There is a quiz night on the 26th September and the Christmas dinner will be on the 30th November.

If you want to find out more about our events, club sessions or private coaching please see our website: [clubspark.lta.org/laceygreentennis](http://clubspark.lta.org/laceygreentennis).

**Nicola Housby**



# Sports Club

So far we are having a great summer at The Sports Club. We had a brilliant time at the Saturday Night Fever Disco last month and have been enjoying a drink in the summer afternoons down the club.

The Saturday Night Fever Disco was an amazing night for the social side of the club and village as well as a crucial fundraiser for the club's survival. It was great to see everyone catching disco fever. Thank you to Clive for the great tunes! Well done to Tom and Sam Oakford for organising the event and all those who helped set up the event and helped on the bar. Also thanks to all our sponsors, we couldn't have held the event without you; Country Supplies, The Black Horse, Tyre Team and P. A. Spittles Landscapes LTD!

We are already looking forward to our next fundraiser so keep an eye out for other events going on. We have been opening the clubhouse on Friday and Saturday evenings which has been a great success and will

This current season at Lacey Green Cricket Club has been nothing short of remarkable, despite the occasional bout of unpredictable weather. From thrilling matches to the unwavering camaraderie among players, this year has truly highlighted the spirit and resilience that defines our club.

While the weather hasn't always been on our side, with some weeks seeing rain clouds threatening to dampen our spirits, the Cricket Club has persevered. The dedication of our players, who hail from various villages and towns, has been truly inspiring. Whether under clear skies or cloudy ones, the commitment to playing good cricket never wavered. The season was filled with memorable moments, tight finishes, stellar performances, and, most importantly, a strong sense of community that kept everyone motivated.

continue until September. We are planning to have a Race Night on the 16th November so make sure you get the date in your diary now to avoid disappointment!

All the sport sections are doing well this year and enjoying the sunshine, when we are lucky enough to have it! We now have an additional youth football section joining us from Radnage Under 8's, it's great to have them on board and will be a great support for the club! If you are interested in getting involved in any of our sections please don't hesitate to get in contact. We are always interested in new members whether Cricket, Tennis, Football or Social. Please check the website for more information.

Make sure you are following our Facebook page and Website for all the latest information about this and other events that we have planned. If you are interested in hiring the club please see more details on our website ([www.lglrsc.co.uk](http://www.lglrsc.co.uk)).

Lacey Green Cricket Club has always prided itself on being a family-friendly club, where players of all ages and abilities are welcomed with open arms.

This year was no exception. Families and friends gathered at the sidelines, cheering on their loved ones, sharing in the highs and lows, and fostering an environment where everyone felt a part of something special. The club's inclusive nature is one of its greatest strengths, bringing together people from different backgrounds, and creating lasting bonds that extend beyond the cricket field.

As we reflect on the successes of this season, our eyes are already set on the future. Lacey Green Cricket Club is planning to introduce coaching sessions for youngsters starting next year. We believe that these young players are the future stars of our club, and it is our responsibility to nurture their talent and passion for the game.

Our amazing volunteer grounds team have been hard at work keeping the field well maintained. The clubhouse has some new furniture and will be getting a new coat of paint later this year as well as plans for a new patio which are well underway! We have also had some items donated from Colin Scofield from Sure Build to help us improve the clubhouse, thank you very much for your contributions. Many hours of work goes into making the field and Clubhouse ready and looking great for cricket and other summer activities.

Of course all of our plans are dependent on the hard work of our few volunteers and the continued success of our fundraisers. We thank all of our volunteers for their dedication. If you would like to get involved please get in touch.

## The Sports Club Committee

By providing structured coaching and opportunities for development, we aim to ensure that the legacy of Lacey Green Cricket Club continues to thrive for years to come.

In conclusion, this season has been a testament to the strength and unity of cricket club. Despite the challenges posed by the weather, our players, members, and supporters have shown incredible resilience and dedication. The spirit of cricket, combined with the warm, welcoming atmosphere of our club, has made this year truly unforgettable.

As we look forward to the next season, with the promise of new initiatives and the continued growth of our community, we are confident that Lacey Green Cricket Club will continue to be a place where cricket is more than just a game—it's a way of bringing people together.

# St John's Church

The St John's Church Garden Party on August 3rd was a lovely relaxed event. Plenty of time to chat, enjoy the garden games, and stroll round the beautiful garden of Lane Farm, and have tea with lots of delicious home-made cake.

Each year the numbers attending seem to increase! As usual the musical entertainment was superb, all provided by talented local groups.

A special mention must go to Mike Eden, who is a regular favourite and Holly Niven, accompanied by her father Keith, who provided a rousing finish to the proceedings.

As an added bonus, over £1,500 pounds was raised for the church, including over £100 from the sale of donated jigsaws.

**Jenny Stothard**



**YOUR LOCAL FARM PARK**

**Tickets from just £3.50**  
Free for under 2's

**HAVE YOU VISITED YET?**



**A LOVELY TRIP OUT FOR ALL THE FAMILY  
INDOOR CAFE SERVING HOT & COLD FOOD**



**GREAT FOR LITTLE LEGS  
LOVELY FRIENDLY ANIMALS  
FREE PICNIC AREA  
BASED IN LACEY GREEN**



For more information visit us online [www.widmerfarmpark.co.uk](http://www.widmerfarmpark.co.uk)  
Find us on Facebook & Instagram

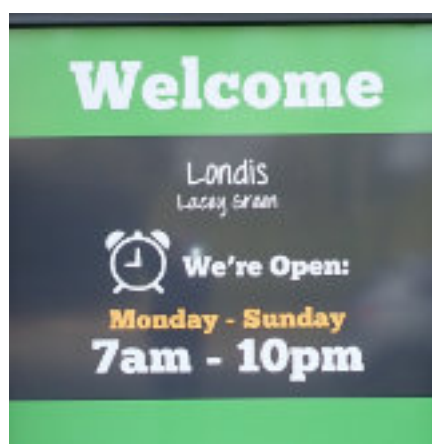
Widmer Farm Park is located at Widmer Feeds Country Store, Pink Road, Lacey Green, Bucks, HP27 0PG



## Lacey Green Convenience Stores

I caught up with Gumma, the shop manager, to see what has happened since our last edition. She told me that the team had had a really busy summer starting with the 1st Anniversary celebration where the girls erected a table outside the shop entrance and provided free samosas and other Indian delicacies for all visitors.

Later both Gumma and Pria managed to get some holidays and visited relatives in India, and Karman is due for her holiday soon.



We have bread, milk, newspapers, hot drinks and all the day-to day items you may need; with the purchasing power of Londis to keep our prices down

The variety of goods stocked has continued to expand. There's a new big shelf of household maintenance products and a bigger freezer with more variety of frozen snacks. They even stock 52 different flavours of vapes!

They have invested in networked mobile terminals and can now sell you top-ups for your phone, electricity, bus tickets etc. even including pretty gift cards to put the vouchers in.

The service to handle parcels has expanded from the original Evri service and now they can handle Royal Mail CollectPlus and Amazon.

Looking into the autumn Gumma is waiting for the big new Costa Coffee machine – it's on a very long lead-time. She is also looking to improve the range of Indian goods and snacks and refurbishing the hot cabinets for samosas and croissants.

She's also working on plans to team up with a local cook to allow customers to order hot meals for collection later in the week – details are not yet finalised.

So all systems are go – we now just need you to pop-in whenever you need some goods and keep the business flourishing.

**Editor**



## Sponsored Walk for St John's Church

We are pleased to let you know that this year's sponsored walk in support of St. John's Church will be taking place on Saturday 21st September. We will leave from St. Mary's in Princes Risborough at 10.30 a.m. and the route will take us along a short section of the Ridgeway and the Icknield Way, before dropping down to St.

Dunstan's, and then back to St. Mary's via Wades Park. The overall distance is approximately four miles and refreshments will be available at the end. It would be great if as many people as possible can take part - the more the merrier! You can get involved in one of 2 ways. · Come on the walk and get sponsorship from family

and friends · Don't bother doing the walk, but still get sponsorship from family and friends!

Please get in touch if you are interested in taking part or simply raising funds by contacting Vince on the Church email account – [stjohnschurchlaceygreen@gmail.com](mailto:stjohnschurchlaceygreen@gmail.com)



ChildCare Malawi is a local micro charity providing practical assistance for disadvantaged children in Malawi and ongoing support for their families. We send an annual consignment of good quality, nearly new items to Malawi for distribution free of charge and would be grateful for donations of:

- ★ Clothes for babies, children, teenagers and adults suitable for a warm climate (not woollens or coats)
- ★ Summer shoes, sandals and flip-flops for all ages
- ★ Bags, handbags and rucksacks
- ★ Simple toys and games (not requiring batteries)
- ★ Picture, story and reference books for primary school age groups
- ★ Towels and bedding (including duvets and blankets)
- ★ Reasonably new smartphones (unlocked)
- ★ Laptop computers and compact digital cameras in good working order
- ★ Wedding dresses and all bridal accessories

Clare Clements ★ [www.childcaremawli.org.uk](http://www.childcaremawli.org.uk)  
 clare @childcaremawli.org.uk ★ 07973 725 060



## BOURNE END SWIMMING CLUB



Offering the perfect balance of a friendly environment with competitive opportunities, our philosophy is to provide all members with the chance to swim to the best of their ability, regardless of their aspirations....

- Flexible swim times with low membership fees
- Up to 4 hours of swimming each week (Spring 2021)
- Using the fantastic pool at Wycombe Leisure Centre
- High ratio of coaches to swimmers
- Swim England Qualified Coaches
- Swimmers need to be at Swim England Learn to Swim Stage 6

**BE Involved**

**BE Inspired**

**BEJSC**

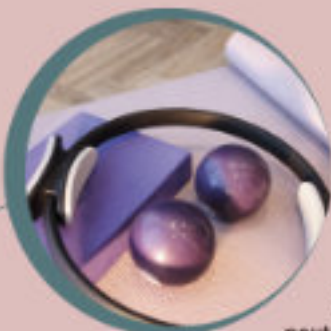
Contact us now for a FREE trial

[www.bejsc-swimming.org.uk](http://www.bejsc-swimming.org.uk)  
[join@bejsc-swimming.org.uk](mailto:join@bejsc-swimming.org.uk)



## PILATES CLASSES

Come and experience the benefits of Pilates with Sarah from Next Chapter Pilates. Beginners welcome!



- 🕒 1-2pm
- 📅 Every Friday\*
- 📍 Millennium Village Hall, Lacey Green

For more info email Sarah at [nextchapterpilates@outlook.com](mailto:nextchapterpilates@outlook.com) or visit [nextchapterpilates.com](http://nextchapterpilates.com)

\*Term time only

# TUTORS

Experienced, qualified tutors offer coaching for:

11+ transfer test (assessment test also available)

All Key Stage levels, GCSE or AS/A level in English, Maths, French, German, Sciences.

English as a foreign language (EFL)

Telephone 01844 347471 or 07884350939



# Parish Council

Summer is here and as we are all aware so is the vegetation on the verges!

We were hoping to take some photos to include in this article, but the vegetation did not do us any favours, so we will just tell you the story and hope that you look for yourselves and appreciate all the hard work that has gone into the projects.

Our first project was to try and have the small lanes off the A4010 resigned to try and stop some of the HGVs causing havoc in the lanes.

We (the Parish Council) first contacted Buckinghamshire Council transport/highways team for their thoughts and assistance with permissible street furniture.

We were given every assistance. Although it has taken a very long time, they finally came up with signage that we felt suitable and bold enough for HGV drivers to see, coming from either direction, and thus advising them of the unsuitability of the lanes in parish off the A4010 namely Foundry Lane and Little Lane before turning into them.

Once we had all agreed, we put forward the proposal and costings to the North West Chilterns Board for matched funding on the project. This was reviewed in detail by all members of the Board and the funding was agreed which then enabled us to give the go ahead to Buckinghamshire Council.

The HGV signs have now been installed – although I notice one has been damaged by oncoming traffic – I have not had any complaints from residents of the lanes about HGVs taking out boundary fences, trees etc. so, hopefully the collaboration with the Parish Council, Buckinghamshire Council and the North West Chilterns Community Board has worked for the residents.

Our second project was the bends coming up to the Pink &

Lily and the top of Pink Road that has seen many many vehicles in the hedge of the corner property over the years.

Again working with Buckinghamshire Council we agreed on more visible and larger signage advising drivers of the blind bends coming from both directions on that corner and yet again costing were received and we approached North West Chilterns Community Board for matched funding and again were successful, thus enabling this project to proceed.

New very bright red, bend indicator signs have been erected just before the entrance to Pink Hill (the road opposite Lilybottom Lane) and approaching the bends from Great Hampden.

Once the weather has cooled down, we hope to have the left hand section of the road from Great Hampden resurfaced, so cyclists and motorists do not drive in the centre of the road to avoid the very uneven surface. Also the road markings are due to be repainted – both lines and roundels, just to reinforce what a dangerous section of road motorists and cyclists are in.

The final project we have commissioned via Buckinghamshire Council are the entrance gates to the village.

These have just been installed after many years of discussions, and once the vegetation has been cut back, hopefully they will make drivers more aware of the approach to our village and to slow down.

We have yet to put up the 'Community Speedwatch' yellow sign on the larger gate, this is being commissioned and will be fixed in place shortly.

These gates were funded by the Parish Council.

The Parish Council would like to thank both the North West Chiltern Community Board for

their help with the projects and especially for the matched funding provided and Buckinghamshire Council for their expertise and help with our projects.

We are always looking for ways to help our residents and are at present looking at trying to reduce the speed on Main Road between the RAF base and our new entrance gates.

We are in conversations with the RAF and have had a speed survey carried out, again, with the financial help of the North West Chilterns Community Board, we are hoping to reduce this stretch of road to 40mph, making it safer for all pedestrians, runners and motorists.

This will be a fairly long process and there are many hours of conversations yet to be held, we will keep you informed.

If any residents have any projects that they would like us to look at, we would be only too pleased to consider them.

Lastly, again no photos, but it would appear that we have a budding artist in the village.

The bus stop near St Johns School has had artwork (some would call it graffiti) scratched into it as has some of the playground equipment.

If anyone knows or suspects who the artist is, please have a quiet word and ask them to please stop, this is not the normal behaviour of the children/teenagers of our lovely quiet village

## Cathryn Davies

Chair Lacey Green Parish Council

# VILLAGE ENVIRONMENTAL SERVICES DOMESTIC DRAIN SERVICES

Proprietor: Dennis Cook  
Est. 1979

24/7  
CALLOUT  
SERVICE

# BLOCKED DRAINS?

# CALL US DAY OR NIGHT

FAMILY RUN BUSINESS SINCE 1979  
BLOCKED DRAINS CLEARED • REASONABLE RATES  
NO EXTRA CHARGE FOR EVENING, WEEKEND  
OR BANK HOLIDAY CALLOUTS  
CCTV DRAIN SURVEYS  
FULL PUBLIC LIABILITY INSURANCE



**07850 635 844**  
01296 624 221 (MESSAGES)





# Council News

## Bus routes

Following the announcement by Arriva, offers of support and assistance were received from many local bus operators, for which the Council are grateful. Officers have been actively engaged in productive dialogue with Carousel Buses and Redline Buses, two commercial operators who already work in Buckinghamshire, and the Council are pleased to confirm the final arrangements for affected services as follows:

### Aylesbury Area.

Redline Buses have taken over former Arriva services X7, X9 and X90 and have replaced these services with revised versions of their own services. Full details can now be found on the Buckinghamshire Council website.

This will see a half-hourly service retained between Naphill and Walters Ash and Aylesbury and High Wycombe and include an hourly Sunday service. An equivalent half-hourly service will run direct via Bradenham on the A4010.

Redline will also launch a change to their X20 service that will see buses increased to run every 15 minutes (on weekdays) with all buses serving Haddenham (up from every 30 minutes) linking Aylesbury, Thame and Oxford. There will be a half-hourly Saturday and Sunday service.

Redline has a fleet of 6 brand new single deck vehicles for use across their routes, with more on order. They have informed the Council that they have also invested in 10 modern double deck vehicles to ensure that they can accommodate the number of passengers, along with a duplicate bus running between Thame, Haddenham and Aylesbury schools on school days.

## High Wycombe Area

All services currently operated by Arriva on the High Wycombe town network are to be replaced by Carousel Buses services. Full details can now be found on the Council website.

Carousel will be renumbering routes back to numbers in the 30s and reintroducing cross-town connections such as service 32 from Mickfield to Booker. Carousel have also worked hard to expand their depot facilities to accommodate 40 extra vehicles. This will result in an improvement of the age profile of buses in the town. Their Freeflow (tap on tap off) ticketing scheme will be expanded in line with their new network, meaning that most buses in the town will now run pay-as-you-go type technology for passengers.

Officers have been working with Carousel Buses to return some services to higher levels of service following their reduction by Arriva over the last year. This includes ensuring that the correct capacities are in place for popular school journeys.

The Council would ask you to give operators time to allow their network to bed in over the coming weeks. This is a significant undertaking by both operators at only ten weeks' notice and the Council will continue to work with them where further changes are needed to balance reliability and demand.

## Childcare

Support is expanding in Buckinghamshire. Eligible working parents in Bucks with children aged +9 months can apply for funded childcare for use in a variety of settings, including nurseries, pre-schools and childminders.

If you are an eligible working parent, you can now apply for:

- 15 hours childcare if your child is aged 9 to 36 months

- 30 hours childcare for your three or four-year-old

You will need to apply by 31 August 2024 to use your hours from 1 September 2024. To do so, visit GOV.UK to get your code for a place in September and then share it with your childcare provider. To continue receiving the Government support, you will need to reconfirm your details every three months on your GOV.UK account.

This comes alongside other government childcare support, including Tax-Free Childcare and Universal Credit Childcare. You might be able to use more than one offer together to help with your childcare costs.

Childcare is also expanding for primary-school age children. From September, parents in England will start to see an expansion in the availability of childcare in their local area before and after school. This runs from 8am until 6pm or later, also known as 'wraparound childcare'. If you are eligible for Tax-Free Childcare or Universal Credit Childcare, you can use the support to help pay for your wraparound childcare.

Also if you wish to check what support in Buckinghamshire you may be eligible for, please check: Buckinghamshire Family Information Service.

## Surgery Dates

Dates for the year are below, running from 10.00 – 12.00.

- 28th September - Stokenchurch Community Library. Wycombe Road, Stokenchurch. HP14 3RG
- 30th November - Lacey Green & Loosley Row Millennium Hall. Main Road, Lacey Green. HP27 0QT

Robert Carington robert.carington@buckinghamshire.gov.uk 07515 997953

# Alpacas

"But why alpacas?". I still can't really answer that - or the looks of incredulity.

It wasn't a spur of the moment decision (not that months of research really prepared us - more on that shortly). Having finally acquired those dilapidated garages fronting Kiln Lane (a tortuous seven year legal process that began following the passing of my former neighbour, councillor and local historian Dennis Claydon) the question arose, what to do with the field that came with it.

Leaving it to the cows for a few weeks a year would have been the easy way out. Too wet for horses or donkeys (and, besides, they seemed just a little too much work). Sheep might fare better but seemed complicated ... and might they annoy the neighbours? We thought about goats but, neglected since Dennis' passing, goat-proofing a 1.5 acre field seemed a mission too far. But it was a no-brainer: alpacas are "light of foot", "clean", "friendly", "easy to control", "low maintenance", "don't smell", "quiet" and "don't challenge fences".

And everything on the Internet is true, isn't it?

After several months trying to acquire a couple of ready-made herds of 3 or 4 geriatric girls in need of a new home, we instead found ourselves exploring nearby breeders (there's a surprising alpaca network developing) and being attracted in particular to the story of Roger Mount, a colourful cigarillo-smoking city gentleman with clearly a thousand stories to tell, and his amazing Snowhill Alpacas near Cheltenham. He started, self-taught, with three "to mow the grass" 20 years ago and now has over 300, including many UK champions (yes, it's a massive thing).

He helped us to choose 5, an almost impossible task, introducing each by name, and describing their genetic background, fibre quality,

temperament - he was gentle when we revealed our criteria was simply a mix of colours - and advised getting boys not girls: if they fall out (and they will) the girls may hold a grudge for life; the boys will patch things up in 5 minutes. No comments, please.

Bedraggled Bandini, Smokey Joe, Xavier, Remus II and Emerys arrived in Kiln Lane in torrential rain at the end of May. They were clearly unimpressed at their fall from grace, particularly having suffered the indignity of being sheared the day before. But they quickly discovered the benefit of the better grass:alpaca ratio (we think they're actually starting to get fat!).

Roger described them as "rather captivating", an understatement if ever there was one. I can spend hours just watching them, they are certainly quirky creatures: all very different with their own peculiar mannerisms. But cursed. The most inquisitive animal on the planet, but so so timid, scared of their own shadow ... or a mistimed sneeze, bird call or barking dog in the adjacent field. Mankind's' exploration of the moon wouldn't have got beyond Florida had we been similarly afflicted.

Let's introduce them.

Bandini, the pure black one is almost impossible to photograph as he always comes out a silhouette. He's everybody's favourite because he's always the first to approach and the bravest. Great bulging eyes, he's fascinated in everything. Gentle with the dogs, achieving "first contact" by day three, he was also the easiest to harness and doesn't wildly object to being stroked.

Smokey Joe is the baby of the group. We HAD to choose him due to his distinctive brown and grey coat ("fleece"?) but also his mischievous glint. He's a naughty little boy - always biting the others' legs and initiating a bit of play-fighting (or sometimes



something a little more amorous being, along with Bandini, still "intact") ... which isn't always what you want to do with Emerys! Smokey and Bandini are thick as thieves - it's been lovely to see their friendship develop.

Xavier, or "sleepy Joe" because he always looks like he's just woken up, is slowly getting his confidence (see front cover picture). He's the oldest - 3 already on arrival - but a born follower. He's always to be found one step behind Emerys, also white, who he clearly sees as his protector. He's impatient at meal times - I wish I was as keen for a bit of muesli - but occasionally now joins in the play-fighting.

Remus II, is the most handsome. An enormously chunky brown boy with a long and very camel-like face. When we first met him he arrived coatless and skinny. I thought he would be the dominant one but he's definitely our shy boy. Always at the back of the pack, he will make sure to manoeuvre someone else in front of him and is the last to seek contact. He's a little bit of a loner but when the others are close by and there's peace in the paddock he makes the happiest little sheep-like sounds. A surprising sign though: when there has been a little bit of an altercation he steps up to defend the victim and reprimand the instigator (usually Emerys) with a barrage of fearless spitting.

Which leaves Emerys, deliberately, to last.

Emerys quickly proclaimed himself our alpha and continues to disprove pages and pages of anecdotal Internet "facts". He's a beautiful, stubborn, arrogant boy



with a side-kick a Thai kick-boxer would be envious of (I approach him now with a cushion in front of my legs), and a head flick to rival the biggest drag queen. He's also got this weird T-Rex action where he suddenly swings his neck 180 degrees when you least suspect it.

Emerys is a rarer Suri alpaca with a longer, apparently more valuable, coat that needs shearing only every other year (while the others are all Huacayas). 3 is the magic minimum number for an alpaca herd - ostensibly because alpacas take turns to guard and one will always be on duty and need to take turns to avoid burnout (according to the Internet...). But it's always him! Even at night he stations himself outside the barn, stays alert, and never sleeps (if I wake in the middle of the night I always check the cameras and, yes, he's there on duty without fail). Occasionally challenged but never toppled, he rules the roost. And so far, it has to be said, us.

He's our nemesis, or our misunderstood hero of the paddock, we're not sure which yet. He can be gentle with the dogs, sniffing nose to nose with apparent affection. But as soon as your back is turned he could be chasing them, occasionally stomping the ground. I don't trust him, and I've chased him round the field a couple of times in return shouting "NO Emerys, bad alpaca" (as per the American guidelines - "they are highly intelligent creatures so always use their names"). The dogs have worked it out too: they are very wary of Emerys and simply keep out of his way but are starting to trust the others.

So was it a mistake? No way! (Although, to be fair, my partner is not so sure: "why don't we get a miniature pony instead, they look so cuddly on Facebook?"). They're still timid. You can be nose to nose with them but they won't willingly be stroked yet. But we're struggling to harness them without traumatising them or getting injured and need to practice that - I think that's the key to everything, including those future alpaca walks! For two complete novices we've come

out relatively unscathed so far - although we've had our fair share of Clarkson's Farm moments, mostly around believing the Internet.

Hugging an alpaca IS akin to a declaration of war (it's how they start a fight) but the biggest myth that we fell for hook, line and sinker was that "alpacas can starve in a field of long grass due to only having one set of teeth" which prompted us to buy a second hand tractor only to realise that 70cm was the maximum height it could cope with. After hand-strimming 0.75 acres we realised 'the boys' were merrily munching through the other half. Thank you Professor Google.

The spitting was also something we were totally unprepared for. Not against us - that suggestion on the US alpaca sites that we'd be regularly sprayed with green phlegm (maybe it's a thing in America) - that's never happened. But they regularly spit on each other, usually a dry spray of shredded grass or grains, particularly at meal times.

It's not the spitting itself but the reaction: alpaca law seems to require the recipient to stand patiently while the "spittee" unleashes 10 or so mouthfuls each with the sound of a 1980s child's cap pistol. Where it all comes from I don't know.

After that, protocol dictates that both will stand adjacent to each other (perfectly still but with no direct eye contact), mouth stretched open to an almost painful extent, for ten minutes, as if to say "ooh I can't believe you just did that". It's hysterical but you kind of feel you should be intervening to break it up. We've had two or three incidents so far of more serious falling-outs involving biting and a little squealing but in all cases five minutes later all is good again after the spitting so I'll assume Roger gave us excellent advice there.

Our lack of knowledge of the natural world - especially in a traditionally agricultural setting like Lacey Green - has been a bigger issue and is just a little embarrassing: What's the



difference between hay and straw? My goodness, doesn't grass grow quickly? Ragwort, who knew?! (And it needs a special fork??).

They're proving much easier than we expected on the whole though: weirdly they all agree where to go to the toilet and never mess in the barn, so it's easy to keep the field clean. They eat grass, hedges, brambles, low hanging branches, and once a day they get a very exciting bowl each of muesli-like stuff, vitamins and alf-alfa (look that one up), so that's easy, and it's true about the fences (so far).

They're just about keeping on top of the front field - maybe we should get another 5 for the rear when it's finally under control? Winter, when the clay starts to hold water and the grass stops being so nutritious, will be telling. The twice a day poo-pick might not be so quick from November. We've got vaccinations, toenail and teeth trimming to come in the Spring and, of course, the shearing, so the honeymoon period will definitely be over by then.

The really positive thing, and I can't overstate this, has been how much pleasure it seems to have brought to other people in the village to see these weird creatures. We love it, are surprised by it, and it makes it all worthwhile. Some have seen already that they can't help but come and check you out, especially if you have a dog or a little person. But if you see us about and you want to get closer, it is absolutely no bother, just give us a wave. No guarantees though - that much is down to Emerys!

**Andy McIlwaine**



## Community Board North West Chilterns

Have you heard of the North West Chilterns Community Board (NWC CB)?

If you haven't, the NWC CB is a Board which tailors itself to the needs of the local area with the common goal of bringing communities together to make a difference. The Board uses local data and intelligence, and, together with engagement and listening to the people in the community, it prioritises areas of focus and explores the issues that are of greatest importance in the local area.

These priorities help determine where the NWC CB can engage, take action, and in some cases, allocate funding to improve the local area.

The Community Board holds a mixture of core and task-focused action group meetings which explore local and corporate priorities, set up projects and find creative ways to meet local challenges.

Our current actions focus on economic recovery, improving the environment, community resilience and transport and road issues.

The Community Board have funded a number of successful projects.

### Two projects:

The Board collaborated with a local organisation to develop a project which engaged with young people from a range of schools/community organisations, to provide a number of conservation activities to enhance habitats and educate individuals. There was a particular focus on work around the threatened Duke of Burgundy Butterfly.

Another project containing lovely walks in the beautiful Chilterns countryside, encouraged individuals to become more active, make new friends and enjoy the scenery around us.

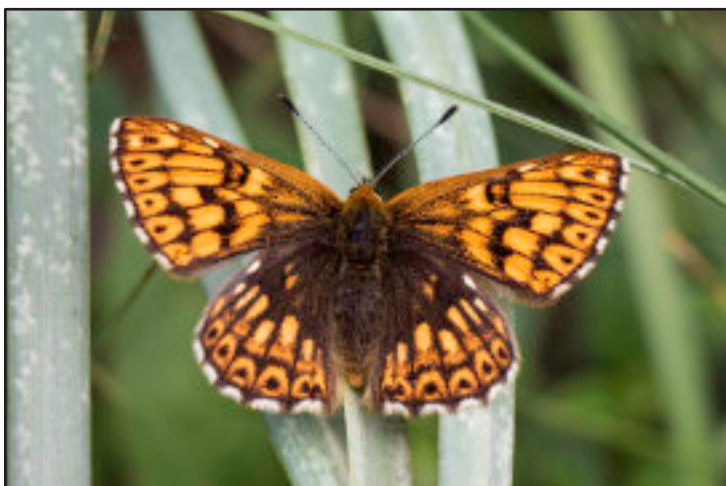
We also organise our own themed events which support our local priorities and something you may want to get involved in.

This year we have a Health and Wellbeing Fayre on 21 September at Longwick Playing Fields and one around the impacts of climate change called "Future Proof – Home and Business" on 19 October at Wades Centre, Princes Risborough.

Would you like to get involved?

Everyone is welcome and encouraged to participate in the Community Board. You can engage in the issues that you feel passionate about, join meetings or take part in a specific priority or project working groups.

If you would like to hear more, please contact [northwestchilterns@buckinghamshire.gov.uk](mailto:northwestchilterns@buckinghamshire.gov.uk)





# On The Farm

In mid-July we were not over impressed with the weather. The rain had got the grass going again after a couple of dry weeks but the unseasonably cool weather was not what the doctor ordered. The maize loves sunny warm weather, it is not impressed with the cold mornings. I know how it feels, having to dress as though it is November in July!

The maize was planted late but most of it has reached the unscientific target of 'knee high by the 4th July' so hopefully will push on to be a normal crop, apart from one crop which has badly eaten by slugs despite being protected by slug pellets.

The wheat is still quite green. There are many diseases wheat can be affected by, in the grain filling stage we are trying to protect the main leaves from fungus as these contribute to a significant part of the yield of the grain by being able to photosynthesise efficiently.

The end of July and beginning of August has brought in generally warm and dry weather and by mid-August the maize is now six foot high, many acres of hay have been made, winter barley has been cut and we are well into the wheat harvest.

Our new grain barn has been finished, see the photo below of the first load of wheat being tipped. The cows have been milking well and enjoying grazing throughout the summer.

The dairy herd is coming up for a busy period with towards 200 cows expected to calve in July-October. See picture of Daisy (our only red cow) and her calf called Piglet.

This obviously gives us a large workload looking after the young calves. This time last year we were shut down with TB and so couldn't sell the beef cross calves to other farmers to rear.

This year we were cleared in March and so can currently sell them unrestricted, being told by Defra to do a 6 month test again in September. However with one email this may all change, Defra has decided to do a Radial test as someone within 3km radius of us has had a TB failure. We are expecting a letter to tell us when they wish us to do it, this is leading to anxious letter opening every 3 days when the postman actually comes. These letters are posted first class, I wonder if they would deliver it at all 2nd class!

I have been asked how technology is being used to change and develop farming. Over the next few articles I will write about different aspects of this at Stocken Farm. One piece of equipment that we have recently installed in a passageway that the milking cows walk through daily after milking, is called Herdvision.

Herdvision captures moving 3D images using a small camera based above the cows. These images are coupled to cloud computing to identify problems a cow has before a trained stock person would have, making early intervention treatment more likely to be successful.

The cows' mobility is recorded on a daily basis. When the system detects the cow is moving differently it sends an alert so we can pick its hoof up and look for a problem, which for an example could be a flint stuck in its sole, obviously the sooner it's removed the better.

The system also monitors the cows' body condition. Our nutritionist is able to look at this information to see if their body condition is suitable for its stage of lactation and therefore being fed the correct ration.

Technology is not cheap to buy and often there are monthly subscriptions to pay as well, making investing a difficult decision. The aim is to improve our cows welfare and to assist our stockman, time will tell if we have made a good investment!

**Richard West**



# Hair 2 Dye 4

by Samantha Woods, ITEC, BACH, NVQL3

## All Hairdressing Services Offered

from my home salon in Shootacre Lane, Princes Risbrough, or in your home

## Crystal and Reiki Treatments

Crystal facials, Crystal massages, Swedish massages  
using pre-blended essential oils

## Crystal and Tibetan Sound Bowl Treatments

07843 257 689

[www.crystalheartandsoul.co.uk](http://www.crystalheartandsoul.co.uk)

[info@crystalheartandsoul.co.uk](mailto:info@crystalheartandsoul.co.uk)

## Diamante detailing

Does your car need a wash and some TLC?

I have experience detailing at car dealerships but have decided it is time to branch out on my own.

- Standard wash: £30 standard car £40 SUVs, vans and 7 seaters  
(wash, glass cleaner, hoover)
- Standard wash for cars with pet hair: £50  
(wash, glass cleaner, hoover)
- Standard wash +: £45 standard cars £50 SUVs, vans, 7 seaters  
(wash, glass cleaner, hoover, upholstery cleaned, interior plastics/leather cleaned)
- Standard wash + for cars with pet hair: £70  
(wash, glass cleaner, hoover, upholstery cleaned, interior plastics/leather cleaned)
- Polish (regular) £125 this includes the standard wash +
- Protective polish (lasts at least a year but up to two years) £250 including the standard wash +

All prices are from ... depending on the condition the car shows up in. Any additional charge will be agreed before work commences.

10% off for first time customers!

I am located in Parslows Hillock. I am fully insured.

Contact me, Josie on [Josiechestnutt2@gmail.com](mailto:Josiechestnutt2@gmail.com) Mobile number:07749 061470



# Widmer Farm Park

As a dog owner and keen equestrian, I have been a long standing and regular visitor to Widmer Feeds and the equestrian centre, and have always been impressed with the wonderful range of goods and the friendly and knowledgeable staff. I don't think there's much I haven't been able to find there for my animals as well as boots and clothing for me and the family.

Since they opened the farm walk I have been meaning to visit, and having my grandson to stay last week gave me the perfect opportunity.

We had the most fabulous morning here and I can honestly say, having visited several local farms with him, that this was his and our favourite.

What makes it so special is the way in which you are actually walking through the farm and seeing the animals as they should be. So many others herd the animals into small pens and barns purely to be "petted" and whilst you can perhaps get closer to them it can feel a little contrived. Widmer is the opposite – the sheep, llamas, donkeys and goats are happy and content in their own areas and if they feel

like coming to say hello they do. I have to say the rustle of the paper bag of food we bought in the shop seemed to encourage most of them and our little grandson loved feeding and stroking them without feeling squashed and surrounded by hordes of people all doing the same in a confined space.

He had the freedom to run around and approach whichever field he wanted to and the views are just spectacular. The hand washing facilities and picnic benches were all immaculately clean and the signage clear and informative.

We went on to have lunch in the newly opened café which, on the hottest day of the year, was a cool and welcoming space. The paninis for us were delicious and the children's meal served in a paper bag ready for colouring was thoroughly enjoyed and the bag packed and taken home to show Mummy and Daddy! The cakes looked delicious (although we didn't try them) and there were plenty of healthy snacks available for little ones too. The staff in the café were so friendly and helpful and we then went to see the guinea pigs and rabbits on the way out.



I highly recommend this to anyone, unbelievably good value and you don't need a child with you – I now wish I hadn't waited, and I shall be going back very soon to enjoy the peace and calm alongside these beautifully cared for animals and, of course, for me to see all the horses happy in the fields! Thank you to everyone at Widmer – a wonderful morning.

**Fiona Quilter-Wood**

## Happy Wanderers

On Sunday April 28th Chris Boll led a walk around Watlington Hill, starting at the foot of the hill where the Ridgeway path crosses the road.

After following the Ridgeway for a short distance we turned off across fields and then followed up the side of a wood.



After passing through a tunnel of yew trees, a short climb brought us to the top of Watlington Hill which is one of the best viewpoints in the Chilterns in clear weather.

Unfortunately on this occasion it was overcast and drizzly.

We then descended by the white spire chalk mark cut into the hill and went to the Fat Fox pub in Watlington which serves an excellent and reasonably priced carvery on a Sunday.

As several people did not join the walk in April, it was decided to repeat it on 30th June, this time the weather was perfect and the views included Wittenham

Clumps and a huge arc around to Waddesden and Quainton. The dreaming spires of Oxford are visible when the sun lights them up.

We welcome new members of all ages including children and dogs, the walks are not too strenuous and usually include the option of a pub meal at the end.

The secretary is Liz Lewin, whose contact details are in the back of Hallmark, if you drop her an email you can be added to the circulation list of future walks, which are usually on the last Sunday of the month.

**Chris Boll**



# BETSY WILLIAMS SOLICITOR



**INSTRUCTION TAKEN IN YOUR OWN HOME**



*Betsy is a qualified Solicitor who comes to you to help with:*

- **Wills • Probate • Inheritance Tax planning**
- **Lasting Powers of Attorney • Trusts**
- **General elderly client work**

*Betsy, you were a real star and made what, for me, would have been a difficult task a really pleasant one due to your kind understanding and patience and of course, your lovely sense of humour! Thanks again Betsy."*

Mrs T

*"May I say what a pleasure it was working with you. You are a considerate professional, not to mention a lot of fun! Thank you for your unending patience."*

Mrs K

**Call: 01844 342083**  
for a free no obligation chat  
or email [betsy@betsywilliams.co.uk](mailto:betsy@betsywilliams.co.uk)

**For more information and referrals - [www.betsywilliams.co.uk](http://www.betsywilliams.co.uk)**



## A Taste of Ukraine in the Chilterns

Meanwhile, our wonderful guests have been sharing a taste of their culture with Princes Risborough. On July 13th, they delighted visitors at the Summer Fete with traditional Borscht, bread, and sweet treats. The day was a success, with many enjoying the delicious fare and engaging in warm conversations with our guests.

### Upcoming Events: Join Us at the Kop Hill Climb

We look forward to participating in the Kop Hill Climb in September. We invite everyone to join us at our stand and support our cause. I can confidently say that the food on offer will be undeniably fresh and delicious!

Your continued support is vital, and together, we can make a meaningful difference in the lives of those affected by the ongoing conflict in Ukraine.

[www.ukraine2chilterns.com](http://www.ukraine2chilterns.com) or contact us on [info@ukraine2chilterns.com](mailto:info@ukraine2chilterns.com)

## From War Zones to Warm Welcomes: The Chilterns' Unwavering Support for Ukraine

For over two and a half years, our incredible community has demonstrated unmatched generosity toward the people of Ukraine. Your compassion has provided families and individuals in desperate need a safe haven, allowing them to escape the turmoil of a war-torn country.

The Ukraine to Chilterns Charity has been working to assist our guests in transitioning from their sponsors' homes to their own accommodations in the area.

We've welcomed new arrivals, supported youngsters in furthering their education, and fostered small business opportunities.

## A Story of Resilience and Art: Val and Irisha's Journey

Val, a filmmaker, was working on a poignant short film about the impact of loss in war when conflict erupted in Ukraine.

On July 11th, several of us attended a screening of his film, "Forced." The film was both excellent and harrowing, capturing the raw human emotions when a loved one is violently lost.

With donations made at the screening, a grant from Ukraine to Chilterns, and practical support from local film industry professionals, Val and Irisha are now aiming to take "Forced" to short film festivals. This exciting project will spotlight the struggles of ordinary Ukrainians, bringing their stories to a global audience.

We eagerly anticipate hosting a community viewing of the film here in the Chilterns soon.

## Visit of ambassadors to St John's Church

Four young ambassadors from the Diocese of Kimberley and Kuruman in South Africa have been visiting Link Parishes here in the Diocese of Oxford. They visited us at Saint John's, Lacey Green, on the afternoon and evening of 4th July.

Our four guests on that day were Cara who is a young Theologian who comes from De Aar and is in her final year of study at Stellenbosch University, Kgothatso who is a young Medic who comes from Galeshewe and who is also studying at Stellenbosch, Rethabile who is a young lawyer who comes from the Parish of St Francis and is studying in Pretoria, and Thato who is a young woman in paid work who comes from the Parish of Greenpoint.

They joined us in Church for a Service of Evening Prayer after which a lavish "English Tea" was served.

There followed a group discussion of the issues and concerns facing our respective communities and churches. The visit ended with a brief service of Night Prayer in the Celtic tradition which concluded what had been



a most interesting and stimulating encounter.

**Jenny Stothard**

# The Importance of Visiting an Audiologist

ASTON  
HEARING

Hearing with clarity is a precious gift but, for millions, hearing loss poses a challenge to communication and overall well-being. The best way to get the most out of your hearing aids and tackle your hearing loss is through the expertise of a hearing aid audiologist, like myself.

Audiologists undergo specific education and clinical training, to help understand and treat your hearing loss. We don't just put hearing aids on your ears; we assess your hearing, provide recommendations and give support throughout your hearing journey.

We can accurately identify the type and severity of hearing loss. Through various tests, discussions with you and evaluations, we gain insights into the causes of your hearing loss, allowing us to help address your unique needs and lifestyle preferences.

Our approach to hearing care extends beyond the initial fitting of hearing aids. At Aston Hearing we take the time to understand your individual concerns. From selecting the most suitable hearing aid to providing education on proper usage and maintenance, we guide you through every step of your hearing journey, empowering you to make informed decisions about your hearing health.

By staying informed about innovations and best practices, we can recommend cutting-edge solutions that enhance the effectiveness and comfort of your hearing aids. Whether it's the latest noise-cancelling features or connectivity options that integrate seamlessly with your smartphone and other devices.

The relationship between myself and a client is built on trust and continuity of care. I forge long-term partnerships with you, providing ongoing support and adjustments as needed. This personalised approach fosters greater satisfaction and reassurance, ensuring that you can enjoy improved communication and quality of life for years to come.

Choosing to visit a hearing aid audiologist is a decision that can profoundly impact your quality of life. With our specialised expertise, personalised approach, and commitment to ongoing support, we are uniquely qualified to help you navigate your hearing loss and rediscover the joy of clear, vibrant sound.

When it comes to your hearing health, trust in the expertise of a hearing aid audiologist for unparalleled care and support!

Hearing Support • Earwax Removal • Hearing Technology

Call us or visit [astonhearing.co.uk](https://www.astonhearing.co.uk)  
to book your comprehensive hearing health assessment

Flint Barn Court, Church Street, Old Amersham | 01494 733 840

The Farmhouse at The Grange, Haw Lane, Princes Risborough | 01494 733 845

Greyhound Lane, Thame, Oxfordshire | 01844 396 057







**Update August 2024**

The recent warm weather has enabled staff to organise plenty of outside activities and a few trips which have been very much enjoyed by the younger clients. A small group had a trip to Windsor to watch the changing of the guards and had a picnic afterwards by the river in the shade. They also had a trip to the Thames Valley Adventure Playground which offers a unique range of adventurous, therapeutic and educational play activities in a safe, caring and stimulating environment for people with all types of disability. Some clients also visited the Connexions Café in Wades Field and the Dementia café at Speen. There have been outdoor games and the new paved area outside the lower hall is now able to be used and clients were able to enjoy sitting outside.



**The trip to Windsor Castle**



**Walk and picnic by the river**



**Bowls**



**Outside games**



**Thames Vallet Adventure Playground**



**Games**



Indoors there are plenty of different activities for our clients. There have been jewellery making sessions, plenty of opportunity to make cakes, pizzas etc, pottery, computer work, sing-a-long sessions, dancing, cardio-drumming, bingo sessions, dominoes, and much more, as well as another entertaining session from the Black Dog Band.



**Cardio drumming**



**Indoor games**



**Craft work**



**Cooking**

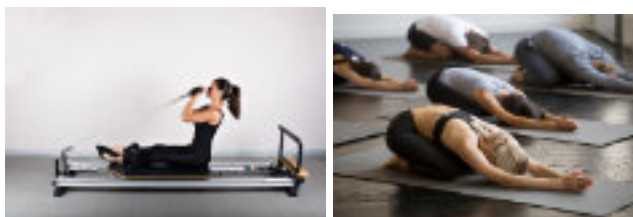


**More craft work**

We had some wonderful feedback from the Jingers 'Animal Magic' concert held in St Mary's Church during Festival week. The trustees are involved with future reorganisation plans but are still concentrating on projects to improve the Centre. A contractor has been engaged and will be starting in September to renew the membrane on the flat roof area of the Centre with High Performance Reinforced Fleeceback EDPM membrane which will extend its life considerably. The trustees are also looking at replacing the cooker once we have done some further research. If you would like to support the Princes Centres in any way or if you or your loved one would like a free taster of what we have to offer, please contact our manager Kim on 01844 345105 or Mags at Bourne End 01628 52702.

# Speen Pilates

## ONES TO ONES ON STUDIO EQUIPMENT



One to one and One to two tuition offers accelerated learning and results, the Reformer uses spring loaded weights to improve your posture, strength and stamina leading to a lengthened, toned body.

## GROUP MAT CLASSES (MAX 6)

Classical Pilates aims to enhance your posture, strength and flexibility, body tone, stamina and general fitness whilst releasing unnecessary tension.

All details of group classes listed on the website

**Amanda: 07733 307475** [www.speenpilates.co.uk](http://www.speenpilates.co.uk)

Member of, The society for the Pilates Method, Pilates Foundation, NHSTA, Back Care.

# ACCOUNTANTS FOR SMALL BUSINESS

At TaxAssist Accountants we specialise in supporting small businesses. We can help with:

- Self Assessment Tax Returns
  - Business Accounts
  - Corporation Tax
  - Bookkeeping and VAT
  - Business Start-ups
  - Company Formations
  - Payroll and HR
  - Help with Finance Raising
- .....and much more.



**01296 752014**

[www.taxassist.co.uk/aylesbury](http://www.taxassist.co.uk/aylesbury)



# Horticultural Society

The Horticultural Society had a fascinating talk on peat-free compost from one of the leading manufacturers. Cath Dawson explained the development of peat free composts and the destruction of unique peatland habitats caused by the extraction of peat for the horticultural industries.

Peat bogs are also important carbon sinks which help in reducing greenhouse gasses, so we need to do our bit to help the environment. The final banning of peat for garden use keeps getting postponed, but we need to start learning how to use the replacement composts now. They are different!

They can be totally wood industry byproduct based, or might include green recycling and coir (from coconuts). They have a tendency to hold water in the base of the pot when the top looks dry, so it is easy to overwater. Try lifting the pot to assess whether it needs watering.

Also, the nutrients deteriorate after three months and need topping up. Some manufacturers put the date of manufacture on the outside of the bag, but most do not, so you could be buying old compost which needs additional nutrients. We managed without peat for centuries, so we should be able to manage now.

The last meeting was a visit to Wild Rose Flower Farm. Last year we had a talk from Rosie Insley and this year we visited her in person at the Farm in Hoggeston just North of Aylesbury. Here she grows flowers and plants for cutting. She sells directly from the farm and everything is grown there. The flowers we buy in the supermarket often come thousands of miles by air or from the continent by road, adding to pollution and greenhouse warming. It is possible to create

beautiful displays for the house or for special occasions throughout most of the year using plants, both annual and perennial which we can grow close to home.

Rosie also gave us a demonstration on how to condition your flowers and how to produce a hand-tied bouquet, which she raffled off at the end of the evening! It lasted over a week and looked beautiful. We were also served home-made refreshments. The weather was kind to us, so we had a wonderful evening in a peaceful part of Buckinghamshire.

By the time you receive your Hallmark we will have had our Annual Show – this year on Sunday 1<sup>st</sup>

September. We are visiting Dahlia Beach at Milletts Farm on 15<sup>th</sup> September and on 18<sup>th</sup> September we have a talk by Alan Clarke: *It Aint Rocket Science*. On 20<sup>th</sup> November we have our Annual Supper and quiz, full details of which will be circulated to

members through our email group and also put on the village website: <https://laceygreen.com/Sections/Hortsoc.php>

We hope to see you at one or more of our events!

**Alison Shreeve**

Chair Horticultural Society





# MOBILE TYRE FITTING WE COME TO YOU!

- Car, Van & High Performance Tyres
- Specialist Wheel Alignment Service
- Truck & Plant Tyre Specialist
- Trade/Accounts Welcome
- Wheel Balancing
- 4 x 4 Tyres



**Stockists Of All Leading  
Makes Of Tyres**

**T** *tyreteam*  
*mobile*

AAAAAA TYRETEAM MOBILE



**T: 01494 565920**



## STALLWOOD LANDSCAPES & GARDEN MANAGEMENT

**FRIENDLY - EFFICIENT - LOCAL**

ALL ASPECTS OF HARD AND SOFT LANDSCAPING UNDERTAKEN

GARDEN RESORATION AND MAINTENANCE

HEDGE AND TREE CARE

QUALIFIED HORTICULTURIST WITH 25 YEARS EXPERIENCE

HAMPTON COURT RHS SILVER GILT MEDAL WINNER

**QUALITY AS STANDARD**

**FOR A FREE QUOTE AND ADVICE CALL ALEX ON**

**07725 743857**

# Lindengate News

We are a Mental Health Charity specialising in social therapeutic horticulture based in Wendover.

Our 6 acre garden in Wendover offers a safe and inclusive space to connect, meet new people and learn new skills through our wellbeing courses and programmes (<https://www.lindengate.org.uk/wellbeing-programmes>). We also offer support to people with memory loss and dementia and their carers through our Memory Pathways sessions (<https://www.lindengate.org.uk/memory-loss>) on a Friday morning.

The gardens are maintained by a large community of over 130 garden volunteers aged from 13 to over 90 but we always welcome more pairs of hands! Find out more. (<https://www.lindengate.org.uk/volunteer>).

Our gardens are open to the public throughout the year during our Open Garden Sessions and for events - see what's coming up below.

We look forward to welcoming you to Lindengate!

## Rest & Refresh Cafe

Over the summer months we are running our pop up 'Rest & Refresh' café on Saturday 20th July, Saturday 24th August and Saturday 28th September during our Open Garden sessions from 1-4pm.

Come along and enjoy a stroll around our 6 acre garden and nature reserve followed by a cup of tea and cake!

## “From Bush to Cup”

Giles Oakley and Mark Lawson from Two Spoons Tea Company (<https://twospoons.co.uk/>) will be hosting a talk at Lindengate on all things tea, including tea tasting!

This event will be held Wednesday 18th September at 10:30am with cake and refreshments also provided. Cost per person is £15.

Book Now <https://thelittleboxoffice.com/lindengate>

## Open Gardens

Our gardens are open to visitors all year, excluding Bank Holidays. Our Summer opening times are:

\* Wednesdays-Fridays 11am-4pm

\* Saturdays 1-4pm

Entry to the gardens is free but donations are welcomed. More details <https://www.lindengate.org.uk/open-gardens>

## Wreath Workshops

Join us this festive season for one of Lindengate's wreath-making workshops, offering you the opportunity to make an individual and stunning wreath based on either a willow or wire frame.

Dates: 29th November, 30th November, 6th December and 7th December. All workshops run from 10am-1pm.



Book Now <https://thelittleboxoffice.com/lindengate>







### The First choice in 11Plus Tutoring

- Bespoke programme.
- Qualified teachers.
- Small class sizes.

Enrol now for a free trial lesson!

07484 171465

inspire11.co.uk

info@inspire11.co.uk



## Shaun Guard

### TV & WIFI SERVICES

- Aerials - supplied, repaired & poor reception solved
- Satellite - Sky Q dish upgrades, discreet dish installation
- Internet - black spots cured, internal & external data cables installed
- TVs - hung on your wall or set up & tuned

**OXFORD AERIALS**  
www.oxfordaerials.co.uk shaun@oxfordaerials.co.uk  
Call Thame 01844 259119



## A Hills Electrical

Domestic Electrician

Free Quotes

No call out charge, No job too small

All domestic work undertaken.

Part P registered.

Call Andy 07864 128150

Hillsandy010@gmail.com

## SELF-CATERING ACCOMMODATION

WINDMILL FARM, PINK ROAD,  
LACEY GREEN, PRINCES RISBOROUGH HP27 0PG  
TEL. 01844 343901  
Email: windmill\_farm@hotmail.com

WEEKENDS AND SPLIT WEEKS AVAILABLE  
LINEN PROVIDED - SLEEPS 2-4  
S.T.B. 2 STAR NON SMOKING

*Ideal for Touring, Walking, Riding etc.  
Stabling available*



## These Four Walls

Rachael

07956 250031

hello@thesefourwallsinteriors.co.uk

Design    Colour Consultation    Styling  
 Decoration    Painting

# plugs

Electrical

Call Tony on 07944 162958  
email tony@plugs.me.uk  
visit www.plugs.me.uk

Domestic & Commercial  
 Installation & Maintenance  
 Inspection, Testing & Fault Finding  
 Electric Vehicle Charging Points  
 Garden Lighting & Outbuilding Supplies  
 Fuse Board Upgrades

## HOME TECHNOLOGY HELP

- Mobile phone, PC/laptop upgrades
- Data transfer between devices
- Printer setup, configuration, diagnostics
- Wi-Fi/Bluetooth network troubleshooting
- Smart TV setup, Sky system upgrade advice
- Small business system upgrades/refresh



Call Dave in Lacey Green on

**07831 775142**

**NO FIX – NO FEE**

## OVENPROUD

To book your oven in or to ask for a quote

Call **01494 488744** ★

**OVENPROUD**

Ovenproud  
"the best you can get in domestic oven cleaning"

Ovens • Aga • 9-B • Hob • Extractor • Microwave • BBQ



# Heavenly Bodies



Apart from the telescope I use from my back garden, the most amazing telescope in history continues to astonish humankind. Its mission is to look nearer the beginning of time, reveal how the first galaxies formed and peer into mysterious dust clouds.

The James Webb Space Telescope (dubbed “Webb” by NASA and named after the agency’s administrator who oversaw the early Apollo missions in the 1960s) was launched on Christmas Day 2021 from French Guiana. It didn’t blast off from Cape Canaveral in Florida because the Earth spins at 1,000 mph at the equator, giving the rocket an extra boost.

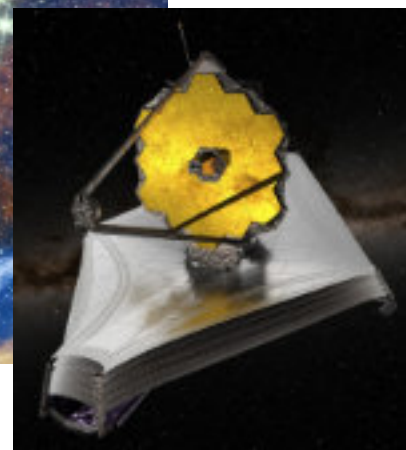
Webb is the successor to the legendary Hubble Space Telescope as it nears the end of its life. The Webb has a much larger mirror than Hubble and more sensitive cameras. The bigger the mirror, the more light from space objects is captured in a given time. Hubble’s mirror is 2.4 metres wide giving a collecting area of 4.5 square metres, whereas the Webb’s mirror is a massive 6.6 metres wide with a collecting area five times greater at 25 square metres. The Webb’s mirror surface is coated in 42g of gold

(about the weight of a golf ball) which reflects 99% of light compared to aluminium mirrors reflecting 97%.

The main scientific instruments on Webb include a high-resolution camera which detects light in the infra-red so it can ‘see’ through dust clouds and reveal previously unknown objects. There is also a spectrograph which measures what chemicals are within stars, galaxies and even exoplanets’ atmospheres from the type of light they emit.

Webb orbits the Sun at about one million miles from Earth in a ‘sweet spot’ where the Sun’s and Earth’s gravitational pulls cancel each other out. This area is known as Lagrange point (L2) and prevents the Webb being pulled in by the Sun or Earth. To protect it from the Sun’s heat, radiation and light which would ruin taking images, a giant five-layered ‘sail’ sunshield on the Webb constantly faces the Sun. The Sun side is 85°C and the other side with the mirror is minus 233°C.

This tremendous engineering effort by many countries has resulted in extraordinary results. In its first two years, Webb has detected what’s in the



atmosphere of a planet more than 1,000 light-years away. It has imaged a galaxy from 13 billion years ago – just 300 million years after the Big Bang. The galaxy showed that it filled with stars much more quickly than the sedate pace which scientists had thought stars developed in the first galaxies.

Webb has also found the most distant black holes ever discovered which were already devouring stars and gas in the very early universe, much sooner than was thought possible. It has imaged stars being born in the dust clouds of the famous ‘Pillars of Creation’ which were hidden from Hubble. The list goes on and so does the astounding work of Webb for at least another 10 years.

Webb is also studying Saturn which you can see with the Moon to the right of it on the evening of September 16th and to the left of the planet the following night. Enjoy the night sky!

All images: NASA

**Chris Dignan**

# Useful local numbers

Local		National	
Bucks Council	0300 131 6000	Gas Emergency	0800 111999
Councillor Etholen	07810 442617	Water Emergency	0800 3169800
PR Community Bus	07941 963097	Electricity Emergency	0800 404090
PR Information Centre	01844 274795	Power Cuts	105
PR Library	01296 382415	NHS Direct	111
Brownies (Naphill)	01494565571	Police non-emergency	101
Scouts (Naphill)	01494 565955	Childline	0800 1111
Hughenden Doctors	01494 562189	Samaritans	116 123
Cross Keys Doctors	01844 344488	Crimestoppers	0800 555111
Unity Health Doctors	01844 344281	Citizens Advice	0808 2787938
Sprinz & Nash Vets	01844 345655	Consumer Advice	0808 2231133
Womens Aid	01494 461367	The Arts Society West Wycombe	07885 232171
Equus drama group	07809 624864		
Sports Club	07768 831196	<p style="text-align: center;"><b>VILLAGE HALL MANAGEMENT COMMITTEE</b></p> <p style="text-align: center;">Clive Hodgton (Chair)</p> <p style="text-align: center;">Jane Hervé (Secretary)</p> <p style="text-align: center;">Leigh Axe (Treasurer)</p> <p style="text-align: center;">Natasha Kann (Booking Sec.)</p> <p style="text-align: center;">Yvonne Axe, Vivien Sheehan,</p> <p style="text-align: center;">Pam Bowell, Cathryn Davies,</p> <p style="text-align: center;">Fiona Quilter-Wood</p>	
Tennis Club	01844 342771		
Parish Council	07495 300626		
Black Horse Pub	01844 345195		

## Defibrillator

Remember that there is a defibrillator unit mounted on the outside wall of the Hall near the kitchen door. In case of a cardiac emergency dial 999 and the operator will talk you through how to use it. It requires no previous training.

Hallmark is published quarterly by the Lacey Green and Loosley Row Millennium Hall Management Committee, although opinions expressed in comment or contribution do not necessarily represent the collective view of that committee.

A version of this printed Hallmark may be found on our website [www.laceygreen.com](http://www.laceygreen.com), which also has breaking news and many additional articles and photos.

Printed by Hartgraph Ltd 01628 810 523

**CLOSING DATE FOR COPY FOR THE DECEMBER EDITION**

**November 15th 2024**





# DISCOVER LACEY GREEN HISTORY WIKI

*Connecting the People, Places and  
Social History of Lacey Green's past*

**FREE TO USE**



WEBSITE  
[www.LaceyGreenHistory.com](http://www.LaceyGreenHistory.com)



CREATED BY  
JOAN WEST



Follow on Facebook  
Lacey Green History Wiki

*including the work of many local history researchers*

Intrigued by the past around us?

Explore Lacey Green,  
Loosley Row, Speen,  
Local Parishes  
and Hamlets

**Welcome to "Lacey Green History Wiki", it is a place to explore Lacey Green of the past: the people, the places and the events that shaped our history.**

My name is Joan West and local history research is my passion. For over 50 years I have enjoyed investigating local history and putting it together like a jigsaw. It is an ever-evolving picture... And growing media wiki! Rather than keep it all to myself I wanted to share with others, who I hope will be as curious and intrigued as I have been.

In this wiki, local people, places and events are recorded and linked so that it is possible to trace back through their stories.

For me it all began in 1971 when I hoped to discover the history of Stocken Farm, my husband's family home. Dennis Claydon was already working on the local history here. Dennis and I spent many hours in the Local Records Office, sharing our discoveries. In 1970 the village magazine Hallmark was launched providing more general information and in particular research by Miles Marshall and Rita Probert.

In 2008 the Local History Group was formed when Dennis Claydon and I declined to write a local book knowing that once printed it could not include any new information that came to light. It was decided to put that information on a website.

In this wiki I am putting information from all these sources so that all those people, places and events can be linked to tell their stories, with as many photographs as possible.

So, now you are here, to get started scroll down the indexes below and click on a page. Organised by:

- Properties
- People
- "Social Snapshots" in Decades
- Roads or Locations
- Amenities
- Organisations

Once you are on a page, people, places and events tell their own story, and are linked together where possible

Please have fun and explore! [www.LaceyGreenHistory.com](http://www.LaceyGreenHistory.com)

**Follow us on Facebook: "Lacey Green History Wiki"**

Do you have information to add to the wiki? Please email [LaceyGreenHistoryWiki@gmail.com](mailto:LaceyGreenHistoryWiki@gmail.com)



# SEE BETTER



JACKSON & Co



247 Main Road, Walters Ash // 01494 564600